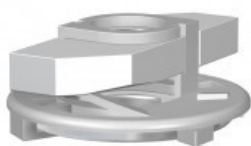


CHANNEL NUT CLICK-EASY



APPLICATION

Suitable for profiles with width 30 and 32 mm. It allows a quick and easy installation thanks to the particular shape of the plastic. Consists of a channel nut, a washer and a plastic element that holds together nut and washer. E 'suitable for use with threaded rods DIN 975.

INSTALLATION

Enter into the profile and turn 90 ° until it clicks.

TECHNICAL DATA

Material: Steel cold-worked and electro-galvanised .

Nut dimensions: 36 x 13.8

Type	Max. adm. load [kN]	Washer [mm]
M6	1,7	28 x 6,6
M8	1,7	28 x 8,6
M10	1,7	28 x 10,6

PROSYSTEM ITALIA SRL

Via Friuli venezia Giulia, 15
30030 Pianiga - Venezia - Italy
T +39.041.510.1622
F +39.041.5131351

P.IVA 03470750278
Reg.Imp. Ve 03470750278
Cap.soc. € 90.000,00
REA Padova n° 311219

info@prosystemitalia.com
prosystemitalia.com

Codice	Nome	Peso	Numero di pezzi
80361	M 8	0.02	50
80362	M10	0.02	50

PROSYSTEM ITALIA SRL

Via Friuli venezia Giulia, 15
30030 Pianiga - Venezia - Italy
T +39.041.510.1622
F +39.041.5131351

P.IVA 03470750278
Reg.Imp. Ve 03470750278
Cap.soc. € 90.000,00
REA Padova n° 311219

info@prosystemitalia.com
prosystemitalia.com