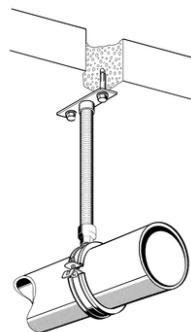
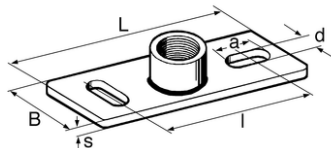
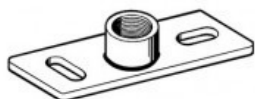


MOUNTING PLATE GPL HCP



APPLICATION

Element for fixation to wall, ceiling and floor for installations in M&E services.

TECHNICAL DATA

Permissible anchor values may restrict the application.

Version / Type	Tension[kN]	Perm. bending moment*[Nm]	Max. lever arm[mm]	Welding method
Stabil M10	4.0	17.2	200	R
Stabil M12	4.0	29.6	300	R
Stabil M16	8.5	70.3	300	M
Stabil R 1/2"	8.5	95.0	350	M

R = resistance welding M = fusion welding

* Limitation due to the Mounting Plate or the load capacity of the Threaded Stud or the Threaded Tube. $\sigma_{perm} \leq 160 \text{ N/mm}^2$ $f_{perm} < 5 \text{ mm}$

Material: Steel, HCP.

PROSYSTEM ITALIA SRL

Via Friuli venezia Giulia, 15
30030 Pianiga - Venezia - Italy
T +39.041.510.1622
F +39.041.5131351

P.IVA 03470750278
Reg.Imp. Ve 03470750278
Cap.soc. € 90.000,00
REA Padova n° 311219

info@prosystemitalia.com
prosystemitalia.com

Type	Dimension L x W x Th [mm]	Elongated holed x a [mm]	Centredistance l [mm]
Stabil M10	120 x 40 x 4	11 x 25	80
Stabil M12	120 x 40 x 4	11 x 25	80
Stabil M16	120 x 40 x 5	11 x 25	80
Stabil 1/2"	120 x 40 x 5	11 x 25	80

Codice	Nome	Peso	Numero di pezzi
112684	M10	0.15	50
112685	M12	0.16	50
112686	M16	0.2	50
112683	1/2"	0.21	50

PROSYSTEM ITALIA SRL

Via Friuli venezia Giulia, 15
30030 Pianiga - Venezia - Italy
T +39.041.510.1622
F +39.041.5131351

P.IVA 03470750278
Reg.Imp. Ve 03470750278
Cap.soc. € 90.000,00
REA Padova n° 311219

info@prosystemitalia.com
prosystemitalia.com