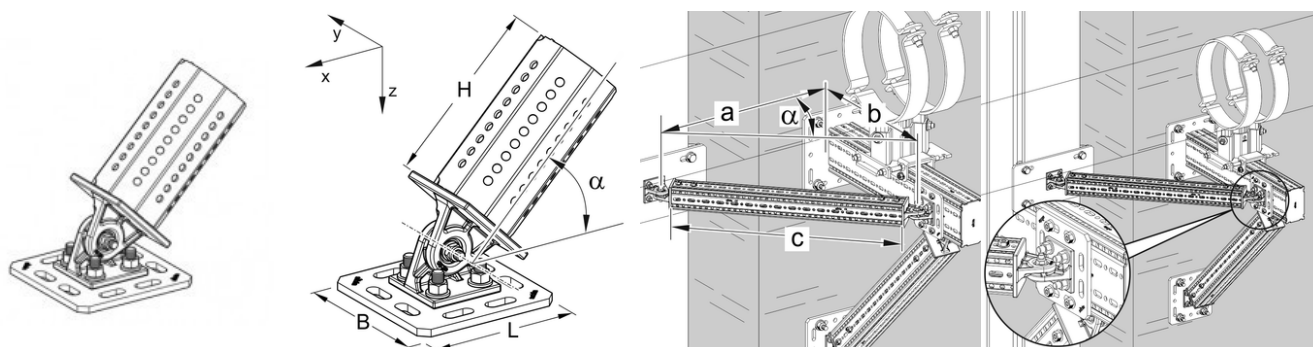


PIVOT JOINT GE F 100/160



APPLICATION

Applicable as a bracing element for single-arm cantilevers in conjunction with siFramo 100/160 section, and for the knee-brace reinforcing of all frame constructions. The pivot can be installed with angles from 25° to 155°.

SCOPE OF DELIVERY

Pivot Joint GE F 100/160 with pre-attached 100/160 joining plate.

INSTALLATION

Attachment of the Joints to the 160 mm face of Beam Section TP F 100/160 by means of 4 Self Forming Screws FLS F at the base plate. The support profile TP F 80 or TP F 100 (depending on joint type) plugged onto the octagon is also attached by means of 4 Self Forming Screws, so 8 Self Forming Screws are necessary in total. The cutting length of the support profile can be determined by the table below-mentioned. After installation at the desired angle the screws have to be tightened with 40 Nm.

TECHNICAL DATA

Material: Steel, HCP.

PROSYSTEM ITALIA SRL

Via Friuli venezia Giulia, 15
30030 Pianiga - Venezia - Italy
T +39.041.510.1622
F +39.041.5131351

P.IVA 03470750278
Reg.Imp. Ve 03470750278
Cap.soc. € 90.000,00
REA Padova n° 311219

info@prosystemitalia.com
prosystemitalia.com

Typ	Height H[mm]	Length L[mm]	Width B[mm]	Angle α	W [kg]
GE F 160 - 80	140	160	160	25° - 155°	3.6
GE F 160 - 100	180	160	160	25° - 155°	4.3

Cutting length c of support profile between two joints:

	b [mm]1000	b [mm]1500	b [mm]2000	b [mm]2500	b [mm]3000
α	c [mm]	c [mm]	c [mm]	c [mm]	c [mm]
25°	2140	3323	4506	5689	6872
30°	1792	2792	3792	4792	5792
35°	1549	2420	3292	4164	5035
40°	1370	2148	2926	3704	4482
45°	1236	1943	2650	3357	4065
50°	1133	1786	2438	3091	3744
55°	1053	1663	2273	2884	3494
60°	990	1567	2145	2722	3299
65°	941	1493	2044	2596	3148

a = horizontal length of distance from centerline of joint at steel structure to profile side of connection 100/160

b = length of cantilever from connection to centerline of joint

c = cutting length of support profile between two joints

α = angle at the opposite of the vertical bracing

Codice	Nome	Peso	Numero di pezzi
115854		3.6	1

PROSYSTEM ITALIA SRL

Via Friuli venezia Giulia, 15
30030 Pianiga - Venezia - Italy
T +39.041.510.1622
F +39.041.5131351

P.IVA 03470750278
Reg.Imp. Ve 03470750278
Cap.soc. € 90.000,00
REA Padova n° 311219

info@prosystemitalia.com
prosystemitalia.com

Codice	Nome	Peso	Numero di pezzi
115855		4.3	1

PROSYSTEM ITALIA SRL

Via Friuli venezia Giulia, 15
30030 Pianiga - Venezia - Italy
T +39.041.510.1622
F +39.041.5131351

P.IVA 03470750278
Reg.Imp. Ve 03470750278
Cap.soc. € 90.000,00
REA Padova n° 311219

info@prosystemitalia.com
prosystemitalia.com