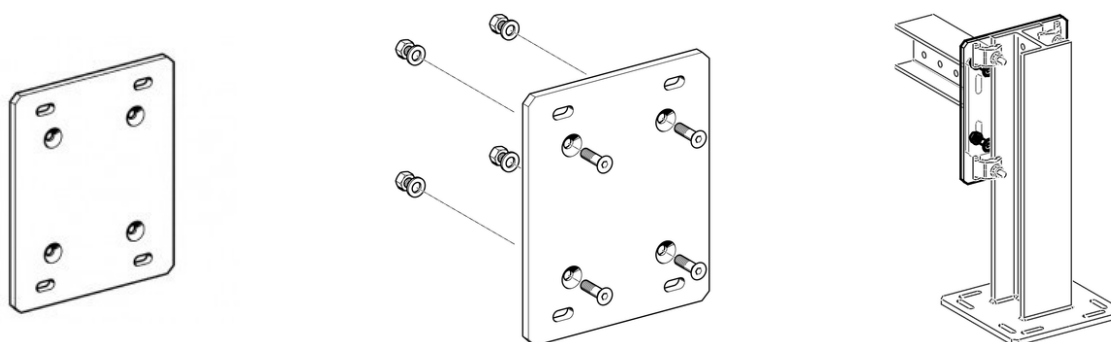


JOINING PLATE AP



APPLICATION

Interface element to enable the connection of standard endplates of Beam Brackets TKO F80 or F100, TKO 100 or 120 to primary steel with flange width >120 mm.

SCOPE OF DELIVERY

Joining Plate AP assembled with:

- 4 Countersink Screws M12 x 40;
- 4 Hexagon Nuts M12;
- 4 Washers.

INSTALLATION

Connect the Joining Plate AP to the Beam Bracket TKO's end plate by using the accessories above. Then continue with either heavy-duty anchors or Assembly Set 5P/Beam Clips as required by the building structure.

PROSYSTEM ITALIA SRL

Via Friuli venezia Giulia, 15
30030 Pianiga - Venezia - Italy
T +39.041.510.1622
F +39.041.5131351

P.IVA 03470750278
Reg.Imp. Ve 03470750278
Cap.soc. € 90.000,00
REA Padova n° 311219

info@prosystemitalia.com
prosystemitalia.com

TECHNICAL DATA

Type	Dimension of Base Plate L x B [mm]	Perforation for	Connection to flange width [mm]
AP 121/160	320 x 260 x 12	M12	121 - 160
AP 161/200	320 x 310 x 12	M16	161 - 200
AP 201/300	420 x 220 x 12	M16	201 - 300
AP 301/310	440 x 220 x 12	M16	301 - 310

Material:

- Joining Plate: Steel, hot-dipped galvanised;
- Bolts: Steel DIN 7991, class 8.8, Dacromet/delta seal;
- Nuts: Steel, class 8, hot-dipped galvanised;
- Washers: Steel, hot-dipped galvanised.

Codice	Nome	Peso	Numero di pezzi
183953	AP 121/160	7.85	1
116534	PIASTRA AP 201/240	10.4	-
183962	AP 161/200	9.34	-
117767	PIASTRA AP 241/310	8.4	-

PROSYSTEM ITALIA SRL

Via Friuli venezia Giulia, 15
30030 Pianiga - Venezia - Italy
T +39.041.510.1622
F +39.041.5131351

P.IVA 03470750278
Reg.Imp. Ve 03470750278
Cap.soc. € 90.000,00
REA Padova n° 311219

info@prosystemitalia.com
prosystemitalia.com