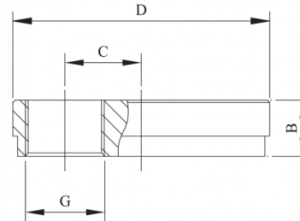


END CAP WITH ECCENTRIC HOLE MOD. 300 R



APPLICATION

Closing cap for a pipe, to connect with a grooved joint. With threaded eccentric hole

TECHNICAL DATA

Working pressure: 20 bar up to 8", 12 bar from 10".

Material:

- Body: spheroidal graphite cast iron according to ASTM A536 and ISO 1083.- Surface treatment: red painted RAL 3000.

APPROVAL

FM, UL.



PROSYSTEM ITALIA SRL

Via Friuli venezia Giulia, 15
30030 Pianiga - Venezia - Italy
T +39.041.510.1622
F +39.041.5131351

P.IVA 03470750278
Reg.Imp. Ve 03470750278
Cap.soc. € 90.000,00
REA Padova n° 311219

info@prosystemitalia.com
prosystemitalia.com

Codice	Nome	Peso	Numero di pezzi
300R060048		0.43	75
300R076060	76,1× 60,3 mm 2 ½"×2"	0.59	48
300R089027	88,9× 26,9 mm 3"×¾"	0.76	48
300R089060	88,9× 60,3 mm 3"×2"	0.76	48
300R114060	114,3× 60,3 mm 4"×2"	1.27	27
300R139060	139,7× 60,3 mm 5"×2"	1.79	18
300R168060	168,3× 60,3 mm 6"×2"	2.55	12
300R219060	219,1× 60,3 mm 8"×2"	5.6	6

PROSYSTEM ITALIA SRL

Via Friuli venezia Giulia, 15
30030 Pianiga - Venezia - Italy
T +39.041.510.1622
F +39.041.5131351

P.IVA 03470750278
Reg.Imp. Ve 03470750278
Cap.soc. € 90.000,00
REA Padova n° 311219

info@prosystemitalia.com
prosystemitalia.com