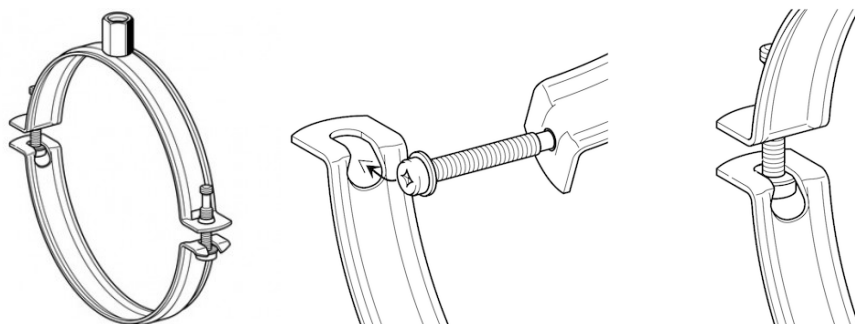


DUCTING CLAMP PLU 2G-N - prosystemitalia.com

DUCTING CLAMP PLU 2G-N - Group 1622



Application

Two-piece pipe clamp for simple installation of spiral-seam ducts.

Scope of delivery

Clamping bolts are pre-mounted and retained. Pivot screw for safe and simple assembly with quick-set clip, suitable for "single-hand" mounting. Easier handling and better storage possibilities due to optimized packaging.

Installation

Tighten upper part of the pipe clamp without the interfering lower part.

Hook the lower part, provided with a keyhole, into the fixed clamping bolt (see picture). After mounting of the pipe and locating into the pivot screw, the clamping bolt is fixed behind the bending; then tighten clamping bolt with max. 2 Nm.

Technical Data

Material: Steel, galvanised.

Type	Material [mm]	Perm. load capacity [kN]	Thread connection
71 - 200	20 x 1.5	0.8	M8/M10
224 - 500	25 x 1.5	1.0	M8/M10

Tipo	Kg	Pezzi per confezione	Codice Articolo
DN 71	0.09	1	199626
DN 80	0.1	1	199633
DN 90	0.1	1	199640
DN 100	0.11	1	199657
DN 112	0.12	1	199664
DN 125	0.13	1	199671
DN 140	0.14	1	199688
DN 150	0.15	1	199695
DN 160	0.16	1	199701
DN 180	0.17	1	199718
DN 200	0.18	1	199725
DN 224	0.24	1	199732
DN 250	0.25	1	199749
DN 280	0.29	1	199756
DN 300	0.32	1	199763
DN 315	0.32	1	199770
DN 355	0.37	1	199787
DN 400	0.41	1	199794
DN 450	0.43	1	199800
DN 500	0.5	1	199817