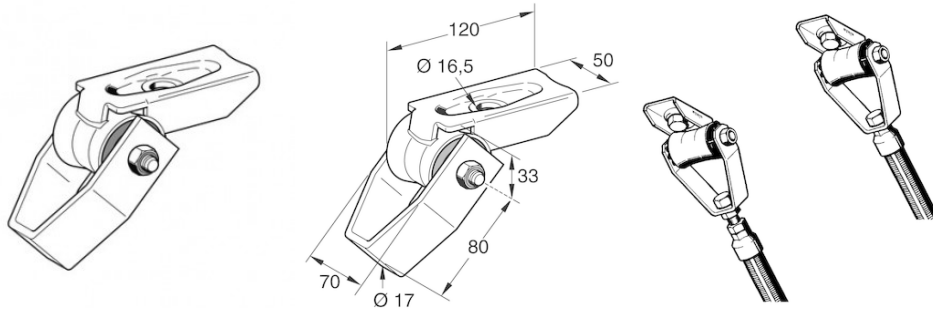


SOUND ABSORBER SDE 2-UG 16 - [prosystemitalia.com](http://prosystemitalia.com)

## SOUND ABSORBER SDE 2-UG 16 - Group 1612A



### Application

Universal sound absorption element for heavy loads. Particularly suitable for soundproof installation according to DIN 4109

of single connections to M16 Threaded rods, also on girders or roof structures of any gradient

of soundproof Fixed Points in trestle arrangement using 4 SDE 2-UG 16.

Suitable for installation of soundproof inclined supports, or onto Channels (recommended from size 41/41).

### Scope of delivery

The joint bracket, which is to be connected with the support system, is pre-assembled using an M10 hexagon bolt and safety nut.

### Installation

For soundproof single point installation we recommend to connect the SDE 2-UG 16 to the centric thread connection of the Stabil D-3G.

For soundproof Fixed Points in trestle arrangement (see picture below), please see the notes in the Fixed Point section.

Instead of the normally used 4 Universal Joints, 4 Sound Absorber SDE 2-UG 16 are used to fix on the building structure.

### Technical Data

Working load (tension or pressure for all directions in the plane of rotation): max. 10 kN

Fixed Point force in pipe axis direction for trestle arrangement as per picture below: max. 25 kN

Sound absorption value: up to 15 dB(A)

Note:

Lateral forces require additional support.

Dimensioning of the anchor of further joining elements may restrict the application.

Type	Connection to building structure [mm]	Connection to system [mm]	Spring constant c [kN/mm]
SDE 2 - UG 16	ø 16.5	ø 17.0	3.5

Material:

- Metal body: Welded steel, electro-galvanised;
- Sound absorption insert: PUR (foamed), RG 650 kg/m<sup>3</sup>.

Temperature range: -30 up to +100°C

Tipo	Kg	Pezzi per confezione	Codice Articolo
UG 16	0.98	10	161053