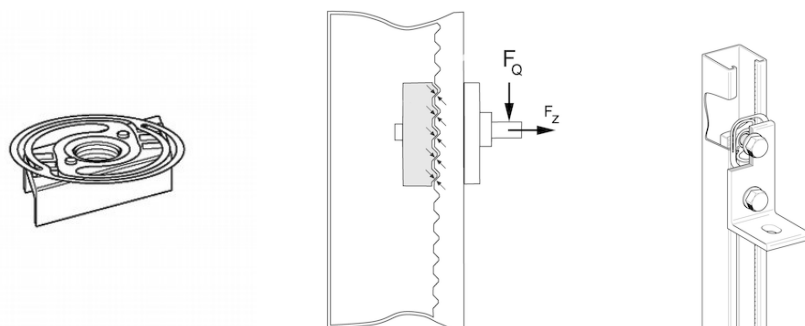


SPEED NUT CC HCP - prosystemitalia.com

## SPEED NUT CC HCP - Group 1814



### Application

In particular useful for installation in vertical channels or places of difficult access.

Further advantages:

- For all Channels of type 41, independent of the channel height.
- No getting stuck on bolt heads when sliding in the channel.
- No appearance of settlement after tightening.

### Scope of delivery

Channel Nut and Spring are tightly connected.

### Installation

After inserting the Speed Nut into the channel opening, it is turned to the right as far as it will go by exerting slight pressure on it; deinstallation may be effected by following the instructions on the reverse order.

Installation and deinstallation do not require tools and may be repeated several times.

### Technical Data

	M6	M8	M10	M12
Tightening torque 8.8 <sup>1)</sup> [Nm]	10	25	40	80

<sup>1)</sup> Using lower steel classes, the value are to be reduced accordingly.

Channel thickness [mm]	M6 FZ ≤ [kN]	M8 FZ ≤ [kN]	M10 FZ ≤ [kN]	M12 FZ ≤ [kN]	M6 FQ ≤ [kN]	M8 FQ ≤ [kN]	M10 FQ ≤ [kN]	M12 FQ ≤ [kN]
1.5	3.2	4.7	4.7	7.5	0.7	1.8	2.9	7.5
2.0	3.2	5.8	5.8	10	0.9	2.1	3.4	9
2.5	3.2	5.8	5.8	11	1.0	2.6	4.1	9
3.0	3.2	5.8	5.8	13	1.1	2.8	4.4	9

Note: The permissible load capacities of the channels are to be respected.

Material:

- CC-Channel Nut: Steel class, HCP;
- Spring washer: Sheet metal spring steel, rustproof.

Tipo	Kg	Pezzi per confezione	Codice Articolo
CC 41-M 6	0.03	1	198698
CC 41-M 8	0.03	50	198650
CC 41-M10	0.03	50	186284
CC 41-M12	0.06	50	110015