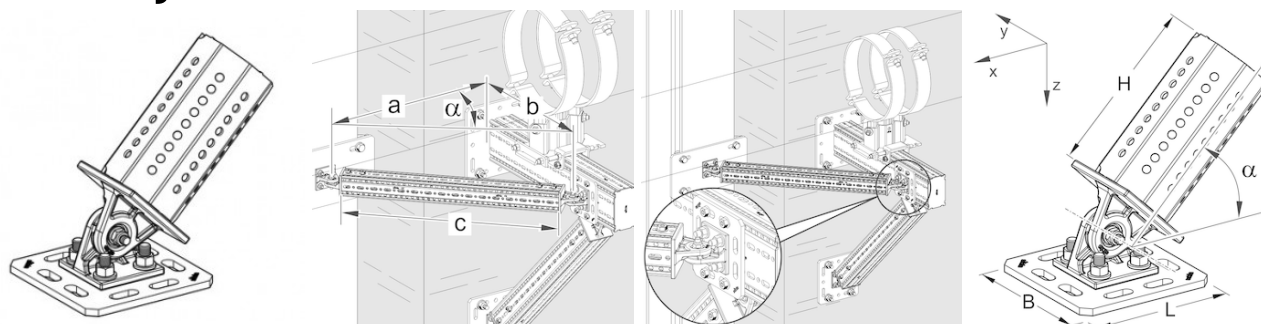


PIVOT JOINT GE F 100/160 - prosystemitalia.com

## PIVOT JOINT GE F 100/160



### Application

Applicable as a bracing element for single-arm cantilevers in conjunction with siFramo 100/160 section, and for the knee-brace reinforcing of all frame constructions. The pivot can be installed with angles from 25° to 155°.

### Scope of delivery

Pivot Joint GE F 100/160 with pre-attached 100/160 joining plate.

### Installation

Attachment of the joints to the 160 mm face of Beam Section TP F 100/160 by means of 4 Self Forming Screws FLS F at the base plate. The support profile TP F 80 or TP F 100 (depending on joint type) plugged onto the octagon is also attached by means of 4 Self Forming Screws, so 8 Self Forming Screws are necessary in total. The cutting length of the support profile can be determined by the table below-mentioned. After installation at the desired angle the screws have to be tightened with 40 Nm.

### Technical Data

Material: Steel, HCP.

| Typ            | Height H [mm] | Length L [mm] | Width B [mm] | Angle $\alpha$ | W [kg] |
|----------------|---------------|---------------|--------------|----------------|--------|
| GE F 160 - 80  | 140           | 160           | 160          | 25° - 155°     | 3.6    |
| GE F 160 - 100 | 180           | 160           | 160          | 25° - 155°     | 4.3    |

Cutting length c of support profile between two joints:

|          | b [mm]<br>1000 | b [mm]<br>1500 | b [mm]<br>2000 | b [mm]<br>2500 | b [mm]<br>3000 |
|----------|----------------|----------------|----------------|----------------|----------------|
| $\alpha$ | c [mm]         | c [mm]         | c [mm]         | c [mm]         | c [mm]         |
| 25°      | 2140           | 3323           | 4506           | 5689           | 6872           |

|     |      |      |      |      |      |
|-----|------|------|------|------|------|
| 30° | 1792 | 2792 | 3792 | 4792 | 5792 |
| 35° | 1549 | 2420 | 3292 | 4164 | 5035 |
| 40° | 1370 | 2148 | 2926 | 3704 | 4482 |
| 45° | 1236 | 1943 | 2650 | 3357 | 4065 |
| 50° | 1133 | 1786 | 2438 | 3091 | 3744 |
| 55° | 1053 | 1663 | 2273 | 2884 | 3494 |
| 60° | 990  | 1567 | 2145 | 2722 | 3299 |
| 65° | 941  | 1493 | 2044 | 2596 | 3148 |

a = horizontal length of distance from centerline of joint at steel structure to profile side of connection  
100/160

b = length of cantilever from connection to centerline of joint

c = cutting length of support profile between two joints

$\alpha$  = angle at the opposite of the vertical bracing

| Tipo | Kg  | Pezzi per confezione | Codice Articolo |
|------|-----|----------------------|-----------------|
|      | 4.3 | 1                    | 115855          |
|      | 3.6 | 1                    | 115854          |